



# drobo

## DroboPro

### Big Storage with Drobo Ease

Built on proven BeyondRAID™ technology, the DroboPro is ideal for creative professionals, such as photographers and videographers, who have large amounts of rich media to store and protect. Also, DroboPro is an excellent alternative to internal RAID for a single server..

Easily add up to 24TB of storage to a workstation or small office server without having to learn anything about storage administration. Just insert up to 8 disk drives into the DroboPro and the innovative BeyondRAID technology takes care of the rest.

#### Up to 8 Disks of Instant Expansion to 24TB and Beyond

Grow your storage in line with your data capacity needs with minimal effort. To add capacity, simply insert a new hard disk drive or replace your smallest drive with a larger one, even when all eight drive bays are full. Unlike traditional RAID systems, the BeyondRAID technology in DroboPro enables you to mix and match disk brands, capacities, and speeds. This enables continuous expansion as drive capacities grow. With DroboPro expansion is automatic and instantaneous and access to data is always maintained.

#### Protection from Two Drive Failures

Enable the dual-drive redundancy option to protect your data from failure of up to two hard drives. It's all done with a single click and without ever losing access to your data.

Running out of space? Switch back to single-drive redundancy at any time. Unlike moving between traditional RAID 5 and RAID 6, there's no need to reformat or migrate data from the DroboPro, potentially saving you hours or days of downtime.

#### Triple Interface Featuring iSCSI

Attach DroboPro directly to a workstation or small office server that requires high-capacity, protected storage. Interface options include Gigabit Ethernet (using iSCSI protocol), FireWire 800, and USB 2.0, with iSCSI providing the highest level of performance.

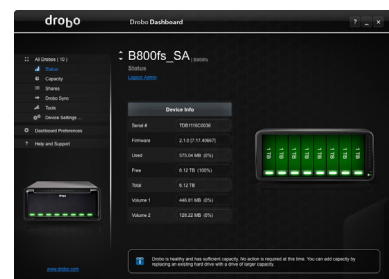
Unfamiliar with iSCSI? It's a high performance protocol that's become extremely popular for storage technology in IT environments, but it can often be complex to manage. DroboPro changes that by introducing zero-click iSCSI configuration for both Windows and Mac OS X.

#### Smart Volumes with Thin Provisioning and Reclamation

Create new volumes in seconds and manage up to 16 x 16TB volumes over time with ease. The innovative and time-saving Smart Volume management technology with Thin Provisioning and Reclamation integrated into DroboPro allows volumes to pull storage from the common pool of disks rather than a specific physical disk allocation. The labor of resizing and migrating volumes is replaced with the simplicity of intelligent engineering.

### Drobo Dashboard

Drobo Dashboard is the single tool to centrally manage all of your Drobo devices. Drobo Dashboard displays status as if all of your Drobo devices were right in front of you with the same status lights and capacity gauge that are on the front panel. All administration tasks are a single click away and there's even a built-in data protection tool called Drobo Copy to easily copy data to and from your Drobo. Simply, it's the easiest way to configure and manage storage.



### Rack Mount Ready, Desktop Quiet

DroboPro is equally at home in a rack mount environment as it is on your desktop. Dual smart fans automatically manage their speeds to optimize both cooling and operating noise. (DroboPro rack mount sold separately.)

## Specifications

<b>Drives</b>	<ul style="list-style-type: none"> <li>8 drive bays</li> <li>3.5" SATA I / SATA II / SATA III drives</li> </ul>	<b>Connectivity</b>	<ul style="list-style-type: none"> <li>1 x 10 / 100 / 1000 Mbps Ethernet port (iSCSI)</li> <li>2 x FireWire 800 ports (FireWire 400 compatible)</li> <li>1 x USB 2.0 port (for initial configuration only)</li> </ul>
<b>Operating System Support</b>	<ul style="list-style-type: none"> <li>Mac OS X 10.5.8 or later, 10.6.8 or later, 10.7.0 or later; Mac OS X Server 10.5.8 or later, 10.6.8 or later (all Intel only)</li> <li>Windows 7 SP1, Vista SP1, XP SP3 (all 32 and 64 bit); Windows Server 2008 R2 SP1 64 bit, 2003 R2 SP1 32 and 64 bit</li> </ul>	<b>File System Options</b>	<ul style="list-style-type: none"> <li>Windows: NTFS</li> <li>Mac OS X: HFS+</li> <li>Cross Platform: FAT32</li> </ul>
<b>Network Protocol</b>	<ul style="list-style-type: none"> <li>iSCSI</li> </ul>	<b>Management</b>	<ul style="list-style-type: none"> <li>Drive bay indicator lights, capacity gauge, status lights</li> <li>Drobo Dashboard version 2.0 or later</li> </ul>
<b>Power and Cooling</b>	<ul style="list-style-type: none"> <li>Internal Power Supply: AC Input - 100/240 VAC, 1.8/0.75 A, 50/60 Hz</li> <li>Power Consumption <ul style="list-style-type: none"> <li>- Idle System (standby, drives off): 13 watts</li> <li>- Typical Idle System (drive spin down mode, 8 drives): 25 watts</li> <li>- Typical Busy System (4 drives): 82 watts</li> </ul> </li> <li>Dual, fixed cooling fans</li> </ul>	<b>Warranty</b>	<ul style="list-style-type: none"> <li>One (1) year warranty in the US or outside the EU or two (2) year warranty in the EU (as provided by EU law)</li> </ul>
<b>Size &amp; Weight</b>	<ul style="list-style-type: none"> <li>Width: 12.17 in (309.1 mm)</li> <li>Height: 5.46 in (138.7 mm)</li> <li>Depth: 14.1 in (358.1 mm)</li> <li>Weight: 16 lb 3 oz (without hard drives or packaging)</li> </ul>	<b>Environmentals</b>	<ul style="list-style-type: none"> <li>Acoustics - Normal Operation: 30.4 dB</li> <li>Operating Temperature: 10°C – 35°C (50° – 95°F)</li> <li>Non-Operating Temperature (storage): -10° – 60°C (14° – 140°F)</li> <li>Operating Humidity: 5% – 80%</li> </ul>
<b>Box Contents</b>	<ul style="list-style-type: none"> <li>DroboPro</li> <li>6 ft USB 2.0 cable, 6 ft Ethernet cable, 6 ft FireWire 800 cable; 6 ft power cord</li> <li>Quick Start Card &amp; Getting Started Guide (printed)</li> <li>Drobo Resource CD, which includes Drobo Dashboard application</li> </ul>	<b>Certifications</b>	<ul style="list-style-type: none"> <li>Environmental: RoHS, WEEE, REACH</li> <li>Regulatory: FCC Part 15 Class A; Canada ICES-003 Class B; CE Mark; CISPR22:19973rd Edition Class B; MIC Mark; VCCI Approval to V.3; BSMI Approval to CNS13438; ACA Approval to AS/NZS 3548</li> <li>Safety: UL, cUL, TUV, CB</li> </ul>

## How to Choose the Right Drive

Drobo gives you the flexibility to use a wide variety of drive types and capacities, but the process of choosing the ideal drive is challenging. To find out which drive is right for the DroboPro, visit [www.drobo.com/products/choose-drive.php](http://www.drobo.com/products/choose-drive.php).

## Capacity Calculator

Use an interactive Drobo Capacity Calculator to estimate the amount of data storage available in the DroboPro. Visit [www.drobo.com/products/capacity-calculator/index.php](http://www.drobo.com/products/capacity-calculator/index.php).

## More Information

For more on the DroboPro, visit [www.drobo.com/products/professionals/drobo-pro/index.php](http://www.drobo.com/products/professionals/drobo-pro/index.php).

Read about Drobo BeyondRAID @ [www.drobo.com/how-it-works/index.php](http://www.drobo.com/how-it-works/index.php).

Ready to buy? Ask your preferred reseller or visit [www.drobo.com/where-to-buy/index.php](http://www.drobo.com/where-to-buy/index.php).

# drobo

2460 North First Street, Suite 100, San Jose, CA 95131 • [www.drobo.com](http://www.drobo.com) • 1.866.97.DROBO

Copyright 2011 Drobo, Inc. Data Robotics, Drobo, DroboPro, DroboElite, DroboStore, BeyondRAID, and Smart Volumes are registered trademarks of Drobo, which may be registered in some jurisdictions. All other trademarks used are owned by their respective owners. All rights reserved. Specifications subject to change without notice.

DS-0098-00 • July 2012